

Wahyudi, Heru

## Article

# The relationship between the renewable energy and CO2 emissions to the Indonesian economy

International Journal of Energy Economics and Policy

## Provided in Cooperation with:

International Journal of Energy Economics and Policy (IJEEP)

*Reference:* Wahyudi, Heru (2024). The relationship between the renewable energy and CO2 emissions to the Indonesian economy. In: International Journal of Energy Economics and Policy 14 (3), S. 349 - 357.

<https://www.econjournals.com/index.php/ijEEP/article/download/15903/7886/36961>.

doi:10.32479/ijEEP.15903.

This Version is available at:

<http://hdl.handle.net/11159/653649>

## Kontakt/Contact

ZBW – Leibniz-Informationszentrum Wirtschaft/Leibniz Information Centre for Economics  
Düsternbrooker Weg 120  
24105 Kiel (Germany)  
E-Mail: [rights\[at\]zbw.eu](mailto:rights[at]zbw.eu)  
<https://www.zbw.eu/econis-archiv/>

## Standard-Nutzungsbedingungen:

Dieses Dokument darf zu eigenen wissenschaftlichen Zwecken und zum Privatgebrauch gespeichert und kopiert werden. Sie dürfen dieses Dokument nicht für öffentliche oder kommerzielle Zwecke vervielfältigen, öffentlich ausstellen, aufführen, vertreiben oder anderweitig nutzen. Sofern für das Dokument eine Open-Content-Lizenz verwendet wurde, so gelten abweichend von diesen Nutzungsbedingungen die in der Lizenz gewährten Nutzungsrechte.

<https://zbw.eu/econis-archiv/termsfuse>

## Terms of use:

*This document may be saved and copied for your personal and scholarly purposes. You are not to copy it for public or commercial purposes, to exhibit the document in public, to perform, distribute or otherwise use the document in public. If the document is made available under a Creative Commons Licence you may exercise further usage rights as specified in the licence.*



# The Relationship between the Renewable Energy and CO<sub>2</sub> Emissions to the Indonesian Economy

Heru Wahyudi\*

Faculty of Economics and Business, University of Lampung, Bandar Lampung, Indonesia. \*Email: [heru.wahyudi@feb.unila.ac.id](mailto:heru.wahyudi@feb.unila.ac.id)

Received: 10 January 2024

Accepted: 08 April 2024

DOI: <https://doi.org/10.32479/ijeep.15903>

## ABSTRACT

The Indonesian government through the National Energy Council has a target for new renewable energy to be increased, starting from 2025 with a target of 23% to 2060 with a target of 66%, but in fact new renewable energy in Indonesia only increases 0.55%/year. Indonesia has great potential, but can the potential be maximized by the government in the direction of a better and environmentally friendly energy policy. This study analyzes the movement of renewable energy and CO<sub>2</sub> emissions to the Indonesian economy from 1990 to 2021, using the vector error correction model (VECM) statistical method by considering short-term and long-term results in the model. The results show that in the long and short term economy the role of gross domestic product (GDP) per unit of energy use for the economy is needed and has a positive effect, the role of carbon emissions in the short and long term CO<sub>2</sub> has a positive and significant direction, non-renewable energy in the long term and short term is still moving negative and significant, this indicates that renewable energy in Indonesia tends to be low, energy replacement must be carried out slowly and gradually, shock response conditions conclude when GDP energy use and CO<sub>2</sub> are affected by a negative shock will disrupt economic development, meanwhile, if there is a negative shock on consumption renewable energy still tends to be stable and positive for the development of the Indonesian economy.

**Keywords:** Economy, Renewable Energy, CO<sub>2</sub> Emissions

**JEL Classifications:** O44, Q43, Q56, Q58

## 1. INTRODUCTION

Indonesia is one of the developing countries with increasing economic growth, this can be seen from the continuous growth of Indonesia's gross domestic product (GDP) per capita every year. However, this economic growth is followed by an increase in carbon dioxide emissions every year so that it has an impact on reducing environmental quality in accordance with the environmental Kuznets curve (EKC) hypothesis. Indonesia has established Government Regulation Number 79 of 2014 concerning national energy policy (KEN). KEN as a product of public policy was determined after going through a "top-down" debate since 2010. The target of KEN is only to focus on energy supply, even though energy policy has shifted to the side of energy demand. KEN does not set greenhouse gas mitigation targets. To

support the achievement of the KEN target regarding the mix of new and renewable energy (EBT), the Government of Indonesia has stipulated various regulations regarding the Feed-in Tariff for the selling price of electricity for EBT generators but it does not run optimally because the price is more expensive, this is an obstacle to the problem of using renewable energy in Indonesia, (Wahid, 2020). The government through the National Energy Council (DEN) has drawn up a roadmap for the energy transition towards net zero emissions in 2060. Every year the target for new renewable energy will increase, starting from 2025 with a target of 23% to 2060 with a target of 66%. The Indonesian government is trying to reach the target of 23% new renewable energy in 2025 but in fact new renewable energy in Indonesia only increases 0.55%/year. The target that should be achieved by the government for the achievement of new renewable energy per year is 0.9%, (DEN, 2020).

Reviewing energy development in Indonesia is presented by several important findings. The increase in energy intensity in Indonesia is represented by an increase in energy in 33 provinces in Indonesia. Energy intensity at the provincial level in Indonesia is largely determined by regional economic activity. The role of the industrial sector influences energy intensity quite dominantly and also supported by policies in the industrial sector will greatly influence the achievement of government targets related to energy policy in an effort to reduce energy intensity by 1%/year, (Azaliah and Hartono, 2020).

The increase in non-renewable energy in Indonesia cannot be simply minimized because the economic sectors in Indonesia are very dependent on the use of non-renewable energy usage which is very high and continues to increase every year. Figure 1 is an overview of CO<sub>2</sub> carbon emission data and per capita GDP usage for energy activities in Indonesia:

Indonesia has a state of increasing energy GDP use, seen where the use of energy GDP has a trend that continues to be high from 1990 to 2021 in Indonesia, this is also followed by an increase in CO<sub>2</sub> which continues to increase every year in Indonesia, according to several studies, carbon emissions in Indonesia are still contributed by non-renewable energy. (Constantia, 2022), excessive consumption of fossil fuels, especially for the combustion process, will increase emission levels in the atmosphere and is very unfriendly to the environment causing CO<sub>2</sub> emissions. The demand for fossil fuels is still high in several countries, including Indonesia, given that the manufacturing sector is the main consumer of fossil fuels in Indonesia and the development of Indonesia's manufacturing industry. (Sari, 2022) the positive influence of value added manufacturing and international trade on CO<sub>2</sub> emissions in the long and short term in Indonesia. High economic activity causes environmental damage.

On the other hand, the potential for new renewable energy in Indonesia is quite large, including ocean, geothermal, bioenergy, wind, water and sunlight. This potential really needs to be developed. Energy policy in Indonesia is currently following international energy policies, namely reducing greenhouse gas emissions, transforming towards new renewable energy, and accelerating the economy based on green technology. Indonesia's commitment to supporting international energy policies includes increasing the use of new and renewable energy, reducing fossil energy, increasing the use of electricity in the household, industrial and transportation sectors as well as the use of carbon capture and storage. (Kementrian ESDM, 2019). In Figure 2 is an overview of renewable energy consumption and non-renewable energy consumption in Indonesia to find out in detail the existing comparison, as follows:

A comparison of energy trends is shown in the following figure where non-renewable energy in 1990-2021 continues to experience an increasing and higher intensity of use throughout the year, of course this is caused by an increase in the activity intensity of the production sector for the economy in Indonesia. On the other hand, the consumption of renewable energy has continued to decline from 1990 to 2021, where the trend has decreased, this is

allegedly because the capacity for renewable energy in Indonesia is still minimal and has not been able to greatly support Indonesia's sectoral economic activity, so the intensity of its use tends to be low. (Muhammad Ferro Berlianto and Setya Wijaya, 2022) Throughout 2000-2019, the consumption of renewable energy did not have a positive and significant effect on the movement of GDP growth in Indonesia, due to the lack of attention in the process of developing the development as well as related to regulations and Indonesia which is currently still meeting its energy demand from non-renewable sources.

The other side of the process of developing renewable energy in Indonesia is, (Halimanjaya, 2019), Indonesia has experienced multi-aspect principal-agent problems between PT PLN, the agent with the sole authority to manage electricity transmission, and various principals, namely the Ministry of State-Owned Enterprises, the Ministry of Energy and Mineral Resources, the Ministry of Industry as intermediaries between the RE industry domestic and foreign, and the Ministry of Finance. While changes to the Ministry of Energy and Mineral Resources' feed-in-tariff (FiT) policy send uncertain policy signals, the Ministry of Finance's fiscal incentive policies other than FiT to encourage RE development in Indonesia remain suboptimal. Indonesia's potential policy direction has natural resources, especially abundant renewable energy resources, which can potentially succeed in realizing the energy transition. To create clean and renewable resources, Indonesia is trying to optimize energy use to ensure the availability of resources. Indonesia's target is that in 2025 the use of renewable energy will reach 23% and in 2050 it can reach 50%, (Kusnadi et al., 2022; Boediman et al., 2021). In Indonesia all stakeholders consider these factors in the development of renewable energy in Indonesia and encourage the private sector to invest and assist acceleration based on providing an analysis of investment opportunities. Factors influencing the development of the energy sector include policies related to human capital, environmental protection and energy efficiency. (Langer et al., 2021) has large amounts of renewable energy resources both on land and at sea. This potential can enable a 100% renewable energy electricity system and meet future demand with limited impact on land availability.

Indonesia has great potential, but can the potential be maximized by the government in the direction of a better and environmentally friendly energy policy. This study will lead directly to how the direction of renewable energy policy in Indonesia is by looking at how the short and long term effects of CO<sub>2</sub>, renewable energy and GDP spent on economic activities on the sustainability of the Indonesian economy and looking at how the condition of CO<sub>2</sub>, renewable energy and GDP for energy if a negative shock occurs, does it affect the sustainability of economic activity in Indonesia.

## 2. LITERATUR REVIEW

The assumption of Kuznets relates to the per capita income of the country's environment is known as EKC. His assumption shows the attention will be directed toward increasing the country's income if it is still relatively low, either through production or investment that encourages income growth, excluding issues of environmental quality income growth is followed by increasing the

pollution and then it declines again if income growth conditions persist. This assumption is from the amount for the quality of the environment, which improves social control and government rules therefore, people are more prosperous (Mason and Swanson, 2002). It will give a big contribution to the national products if the country's income improves in line with economic development, manufacturing products. To conclude, industrialization starts in small industries and continues in large industries. The increment of using the natural resources and degradation of environment intensification degradation is the phase of middle-income level, the development phase dominates industrialization by increasing the share of its internal social items when industrial activity grows steadily. In this case, the utility of uncooked materials will decrease, and the elimination of waste per unit of production will increase.

The relationship between CO<sub>2</sub> and the economy from various studies has found the following results, short-term two-way panel causality between CO<sub>2</sub> emissions and employment and between available energy and employment. The results show one-way causality of available energy and employment to GDP. The results of a long-term causal relationship show that the estimated error correction term (ECT) coefficient meets the requirements in the short and long term and has a close relationship between CO<sub>2</sub> emissions and GDP, (Mitić et al., 2023). The coefficient of economic growth is positive and significant with CO<sub>2</sub> emissions, showing an increase of 1% of economic growth is associated with an increase in CO<sub>2</sub> emissions, the coefficient of renewable energy use is negative and significant, implying that a 1% increase in renewable energy use results in a reduction in CO<sub>2</sub> emissions in the long run. Empirical findings reveal that economic growth and expansion of agricultural land increase CO<sub>2</sub> emissions while increased use of renewable energy improves environmental quality by reducing CO<sub>2</sub> emissions. (Raihan and Tuspekova, 2022), energy consumption worsens environmental quality through high carbon emissions, economic growth as a significant determinant of positive carbon emissions. Urbanization and population growth as a factor of carbon emissions. In the causal relationship in the middle of the series, there is a two-way causality between economic growth and carbon emissions, between energy consumption and economic growth, between economic growth and population growth, between energy consumption and urbanization, and between economic growth and urbanization, (Chen et al., 2022).

The relationship between renewable energy and economic growth. Efficient energy use is a prerequisite for economic development. But the excessive use of fossil fuels is detrimental to the environment. Because renewable energy emits no or low greenhouse gases, more and more countries are trying to increase their use of energy from renewable sources. That renewable energy does not hinder economic growth for both developing and developed countries, while the consumption of renewable energy (threshold level) is not so important. On economic growth for developed countries, (Bhuiyan et al., 2022) renewable energy consumption triggers an acceleration of GDP, compared to other energy variables considered in the model. Compared to the standard econometric model, this experiment is able to show and choose which input can produce the best target. The best output

is GDP per capita. The positive variation, through the prediction process of the four ITEs, is due to the acceleration of renewable energy, policy measures intensifying the process of changing the energy structure by promoting a more intensive use of renewable energy, (Magazzino et al., 2021).

### 3. RESEARCH METHODOLOGY

#### 3.1. Types and Sources of Data and Variable Operational Definitions

This research is in the form of descriptive quantitative problem solving based on data, by presenting, analyzing and interpreting it. The data used is secondary data, this data is obtained indirectly from various publications, publications of official data platforms and publications of various data collection books. The data for the observation area is the coverage of the territory of the State of Indonesia, the data used is secondary data (time series) with the 1990-2021 time series. The data used is published on the official website <https://data.worldbank.org/>. The following is a summary of the variables, units, descriptions and data sources in the study:

1. Economic Growth (PE)

Growth and development of income (GDP) from the value of goods and services produced in Indonesia.

2. CO<sub>2</sub> emission (ECO<sub>2</sub>)

Carbon dioxide emissions come from burning fossil fuels and manufacturing cement. This includes carbon dioxide produced by the consumption of solid, liquid and gaseous fuels and the combustion of gases.

3. GDP per unit of energy use (GDP)

GDP per unit of energy use is PPP GDP per kilogram of oil equivalent to energy use. PPP GDP is GDP converted to constant 2017 international dollars using the purchasing power parity rate. The international dollar has the same purchasing power over GDP that the US dollar has in the USA.

4. Consumption of renewable energy (CET)

Renewable energy consumption is the share of renewable energy in the total final energy consumption.

#### 3.2. Vector Autoregression (VAR) Data Analysis Method

The analysis used in this study is a non-structural model using the VAR method. Data analysis was carried out using a descriptive quantitative approach. Quantitative is a research method based on positivism, used to view certain samples (Sugiyono, 2012). The data used in this study is time series data, so it is necessary to analyze the interdependence between these variables. VAR is a model that is able to analyze the interdependence relationship between time series variables. According to (Widarjono, 2013) VAR has several model advantages:

1. There is no need to distinguish between exogenous and endogenous variables. All variables both exogenous and endogenous that are believed to be related should be included in the model. However, exogenous variables can also be included in the VAR.



- To see the relationship between variables in the VAR requires a number of existing variable lags. This lag is necessary to capture the effect of this variable on other variables in the model.

This study uses the VAR model framework, used in order to find out how the economic conditions are from various types of Energy variables. In terms of the direct impact of energy use using carbon dioxide emissions, conventional energy use uses GDP per unit of energy use and renewable energy uses the total final consumption of renewable energy. The structure of this model begins with (1) The relationship of energy conditions namely ECO<sub>2</sub>, PDBE and KET with Economic Growth. (2) Response of economic growth to shocks from energy conditions, namely ECO<sub>2</sub>, PDBE and KET. (3) how big is the contribution of the energy performance variables namely ECO<sub>2</sub>, PDBE and KET to Indonesia's economic growth. To answer all questions in this study using the VAR analysis method if not cointegrated, if cointegrated then VECM analysis will be used.

- The Long-Term Equation of Economic and Energy Growth in Indonesia:

$$PE_{nt} = \alpha_0 + \beta_1 ECO2_{t-j} + \beta_2 PDBE_{t-j} + \beta_3 KET_{t-j} + \varepsilon_t$$

- Short-Term Equation of Economic and Energy Growth in Indonesia:

$$\Delta PE_t = \alpha_0 + \lambda_1 \Delta ECO2_t + \lambda_2 \Delta PDBE_t + \lambda_3 \Delta KET_t + \lambda_4 Ect + \varepsilon_t$$

Where:

PE	Economic growth (%)
ECO <sub>2</sub>	CO <sub>2</sub> Emissions (Metric Tonnes Per Capita)
PDBE	GDP per unit of energy use (USD)
KET	Renewable energy consumption (%)
$\lambda_1, \lambda_2, \lambda_3, \lambda_4$	Short term relationship coefficient
$\alpha_0$	Constant Intercepts
$\beta_1, \beta_2, \beta_3$	Long term relationship coefficient
ECT	Error Correction Term
$\varepsilon$	Error Term
j	Parameters (lag 1, 2, etc.)

### 3.3. Data Analysis Procedures

#### 3.3.1. Stationarity test (unit root test)

The unit root test was first developed by Dickey-Fuller and is known as the Dickey-Fuller (DF) unit root test. The DF unit root test assumes that the disturbance variable  $\varepsilon_t$  is bound with an average of zero, so that the variance becomes constant and has no relationship (non-autocorrelation) (Widarjono, 2018). One of the formal concepts used to determine stationary data is through the unit root test. If a time series data is not stationary at zero order I(0), then the stationarity of the data can be searched through the next order so that the level of stationarity is obtained at the nth order (first difference or I(1), or second difference or I(2), etc.

The hypothesis for this test is:

- H<sub>0</sub>: d=0, there is a unit root, not stationary
- H<sub>a</sub>: d≠0, there is no unit root, stationary

If the test results reject the hypothesis that there is a unit root for all variables, it means that all are stationary or in other words, the variables are cointegrated at I(0), so the estimation will be carried out using linear regression.

#### 3.3.2. Optimum lag determination

In determining the optimum lag, you can use the criteria put forward by Akaike (Akaike Information Criterion [AIC]) (Widarjono, 2013). These criteria can be written as follows:

$$\ln AIC = \frac{2k}{n} + \ln \frac{SSR}{n}$$

Where:

SSR=Sum of squares residual (sum of squares residual)

k=Number of estimated parameter variables

n=Number of observations

The length of lag chosen is based on the minimum AIC value by taking its absolute value.

#### 3.3.3. VAR stability test

VAR stability needs to be tested before conducting further analysis because if the VAR estimation results to be combined with the error correction model are unstable, then the impulse response function (IRF) and variance decomposition (VD) will be invalid. To test the stability of the estimated VAR that has been formed, stability conditions are checked in the form of roots of characteristic polynomials and inverse roots of AR characteristic polynomials.

#### 3.3.4. Johansen cointegration test

The concept of cointegration is basically to find out the possibility of a long-term equilibrium relationship in the observed variables. In the cointegration concept, two or more non-stationary time series variables will be cointegrated if their combination is also linear over time, although it is possible that each variable is not stationary. As a basis for decision making, the following testing criteria can be used:

- H<sub>0</sub>: β=0, The variables have no cointegration
- H<sub>a</sub>: β≠0, The variables have cointegration

#### 3.3.5. VAR and VECM estimation

After the cointegration test is carried out on these variables, the next step is to form a VAR or VECM model. If there is a cointegration relationship between the research variables, then the estimation is done with VECM, whereas if there is no cointegration, the estimation is done with VAR. The independent variable is said to be significant in influencing the dependent variable. Meanwhile, to find out a negative or positive relationship is to look at the sign on the variable coefficient.

#### 3.3.6. IRF

Forecasting in VAR is an extrapolation of the current and future values of all variables using all the information in the past. Impulse response analysis is one of the important analyzes in the VAR model. Impulse response analysis tracks the response of endogenous variables in the VAR system due to shocks or changes in the disturbance variable (Widarjono, 2013). Impulse response

analysis can see how much the independent variable is affected by shocks or shocks that occur in the dependent variable some time in the future (in units of each variable).

### 3.3.7. VD

This test is used to measure the estimated error variance of a variable, namely how big a variable is in providing an explanation for another variable or for the variable itself. Basically this is another method to describe the dynamic system contained in VAR. It is used to measure the estimated error variance of a variable. How big is the difference between the variants before and after the shock, both shocks originating from the variable itself and shocks from other variables (Gujarati, 2009). This VD will be used to help determine the determinants of the dependent variable on the independent variable because it can explain how much the independent variable can affect the dependent variable.

## 4. RESULTS

### 4.1. Stationarity Test

Table 1 is the results of the stationarity test used in this study using the root unit test using the Augmented Dickey Fuller Test (ADF test).

Results of the unit root test by comparing the value of the t-count with the critical value for each  $\alpha$ , namely 1%, 5%, and 10%, it can be concluded that there are no variables that are stationary at the level, so that the unit test will be repeated root test on the first difference on each variable and the results can be seen in the following Table 2:

The unit root estimation results at the first difference level for all variables are stationary. This means that the data used in this study are integrated at order one or can be shortened to I (1) so that the data is free from spurious regression problems. Therefore, the stationary requirements have been met, the next stage can be further data processing.

### 4.2. Optimum Lag Determination

Based on the AIC value, the optimum lag length is 2. So the lag value that will be used for further research is lag 2. The results of determining the length of the lag are shown in the following Table 3:

Based on the Table 3 of determining the optimum lag used in the economic growth model (PE), GDP per unit of energy use (GDP), renewable energy consumption (KET) and carbon emissions (CO<sub>2</sub>), the VAR/VECM equation model is at lag 2.

### 4.3. VAR Stability Test

Stable or not the estimated VAR that has been formed is checked for stability conditions using the roots of characteristic polynomial and inverse roots of AR characteristic polynomial.

Based on Table 4 it shows that the modulus values of all equation models are <1 so it can be concluded that the VAR model is valid. Next, testing the stability of the VAR using the inverse roots AR characteristic polynomial is shown in the following Figure 3:

VAR stability by using the inverse roots of AR characteristic polynomial for all equation models shows that the points on the circle or the distribution of the data do not go outside the circle, this means that the data is valid for further analysis using VAR. Therefore, testing the stability of the VAR by using and roots of characteristic polynomial and inverse roots of AR characteristic polynomial is valid, which means that the results of the analysis of the IRF and VD in the VAR estimation are valid.

### 4.4. Cointegration Test

Cointegration was carried out through the Johansen cointegration test with an optimum lag of 2 according to the determination of the optimum lag based on the AIC that has been carried out previously. The Johansen cointegration test method is carried out by comparing trace statistics with critical values using a significance level of 5%. If the trace statistic is greater than the critical value, then there is cointegration in the system of equations. Cointegration test results in this study can be seen in the following Table 5:

Based on the Table 5, it shows that the trace statistic value  $r=0$  is greater than the critical value with a significance level of 5%, which is  $64.07229 < 47.85613$ . This means that the null hypothesis which states that there is no cointegration in the variables used is rejected and the alternative hypothesis which states that there is cointegration is accepted. Thus, the results of the co-integration test indicate that in the equation model of the economic growth model (PE), GDP per unit of energy use (GDP), renewable energy consumption (KET) and carbon emissions (CO<sub>2</sub>), have a stability/balance relationship and the same movement in the long run. Therefore, in each short-term period, all variables tend to adjust to each other to achieve long-run equilibrium. Thus the correct model to use in this study is the VECM instead of VAR because the variables used are cointegrated and stationary at the first difference level. This is a requirement that must be met in testing the VECM model and this model is in accordance with research conducted by Mujica and Saens (2016).

### 4.5. Estimasi VECM

The results of the first order difference test, stable and cointegrated in the long and short term are estimated using the error correction vector model (VECM), the following is the result of the equation:

#### 4.5.1. Long-term estimation model

He estimation results on the research variables obtained can be said to have a significant effect if the t-count value is greater than the t-table value with a significance level of ( $\alpha=1\%$ )=1.31370, ( $\alpha=5\%$ )=1.70329 and ( $\alpha=10\%$ )=2.47266. In the Table 6, long-term model there is a significant influence between the variables per unit of energy use (PDPE), renewable energy consumption (KET) and carbon emissions (CO<sub>2</sub>) on the Indonesian economy in the 1990-2021 period.

#### 4.5.2. Short-term estimation model

The coefficient of ECT which shows the speed of adjustment, namely the speed of the residual/error in the previous period to correct changes in variable Y towards balance in the next period. The negative sign (–) on the ECT coefficient indicates the validity of the model specification. In the Table 7, VECM short-term

estimation results show a negative ECT coefficient, which is  $-0.623649$  and significant at a significance level of 0.05. This means that the conditions for short-term VECM estimation are met and the VECM model is declared valid. The negative sign in the coefficient indicates that the error is corrected by 0.62% annually in the equation for testing short-run balances.

#### 4.6. IRF

The results of IRF analysis to analyze the impact of shocks (shock) on economic growth on energy variables and carbon emissions, shocks on PDBE, KET and CO<sub>2</sub>. The results of IRF analysis are used to show how a variable responds to a shock in the variable itself and other endogenous variables. The following are the results of IRF:

In the Figure 4 shows the positive response of economic growth to GDP shocks per unit for energy use (GDP) period 1 to period 5, if GDP shocks occur the economic growth tends to be stable and positive, increasing or decreasing GDP per unit for energy use (GDP) in periods 1-2 is classified as stable, whereas if there is a shock or a decrease in GDP on economic growth in periods 3-5 it tends to have a negative effect which will reduce or disrupt the economy. Economic growth against shocks to the consumption of renewable energy (PE) for periods 1-5, if there is a shock to consumption of renewable energy (PE) for economic growth in periods 1-2 tends to have a negative effect that will reduce or disrupt the economy, whereas if there is a shock to renewable energy consumption (CET) on economic growth tends to be stable and positive, the increase or decrease in consumption of renewable energy (CET) in the 3-5 period is relatively stable. The response to carbon emissions (CO<sub>2</sub>) in periods 1-5, shows negative results, if there is a shock or reduction in carbon emissions (CO<sub>2</sub>) on economic growth in periods 1-5 it tends to have a negative effect which will reduce or disrupt the economy.

#### 4.7. VD

VD is used to compile the forecast error variance of a variable, namely how big the difference is between the variance before and after the shock, of other variables to see the relative effect of the research variables on other variables.

The results of the Table 8, VD in the model show that the contribution of high carbon emissions is the same as indicating an increase in the Indonesian economy. The VD figure in periods 1-5 has the highest contribution to carbon emissions with 8.37% influencing and contributing to Indonesia's economic growth in 1990-2021.

## 5. DISCUSSION

The direction of energy policy from several studies on Indonesian energy is reviewed through several findings, (Dat et al., 2020) energy consumption and economic growth in Indonesia tend to have short and long term effects. energy consumption leads to economic growth because industrial energy consumption tends to increase output as well as unemployment which adds to the value of a country's GDP and hence, Indonesia has enjoyed increasing economic growth over the last 19 years from 2000 to 2019 (Alfisyahri et al., 2022). The case in Indonesia of carbon dioxide

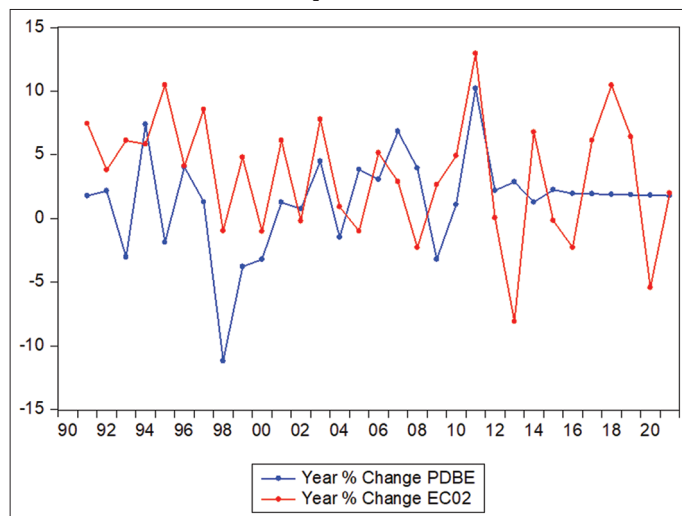
emissions and consumption of renewable energy-hydropower is significantly positive for economic growth in the long term and short term, while consumption of renewable energy-thermal earth, biomass, and other sources have a significant negative effect on economic growth, during 1990-2020. (Marwa et al., 2022) CO<sub>2</sub> emissions encourage Indonesia's economic growth because pollution control is less than optimal in the short term. Indonesia needs to implement development policies that prioritize pollution control, emission taxes, and energy conservation on electricity consumption, such as the use of renewable energy consumption. Can be an alternative for controlling CO<sub>2</sub> emissions, increasing Indonesia's carbon emissions cannot be avoided because it is dependent on non-renewable energy and this indicates Indonesia's economic activity has increased in 1971-2020.

The results of the study show the direction of energy policy in Indonesia seen from the results for the 1990-2021 period showing statistical findings in the sphere of influence of GDP per unit for energy use (PDBE), renewable energy consumption (KET), carbon emissions (CO<sub>2</sub>) on the Indonesian economy. In the long term, the accumulation of GDP per unit for energy use (GDP) has a positive and significant effect with a 1% increase in value affecting and increasing economic growth by 2.02%, renewable energy consumption has a negative and significant direction, every 1% increase will decrease economic growth of 1.16% and carbon emissions have the highest impact, every 1% increase will increase 21.9% of Indonesia's economic growth.

In the short-term accumulation results show that GDP per unit for energy use (GDP) in the short term has a positive and significant effect on lags 1 and 2, if there is an increase of 1% GDP per unit for energy use (GDP) in the first lag it will increase economic growth of 1.75% and in the second lag economic growth will increase by 1.73%. Consumption of renewable energy (CET) in the short term has a negative and significant effect on lags 1 and 2, so if there is an increase of 1% renewable energy consumption (CET) in the first lag will reduce economic growth by 0.76% and in the second lag economic growth will decrease by 0.24%. Carbon emissions (CO<sub>2</sub>) in the short term estimate have a positive and insignificant effect on lag 1, carbon emissions (CO<sub>2</sub>) on lag 2 have a positive and significant influence with a coefficient value of 15.02295, so if there is an increase of 1% carbon emissions (CO<sub>2</sub>) in the second lag will increase economic growth by 15.02%. Looking at the trend chart between 3 variables regarding energy in Indonesia is presented through Figure 5.

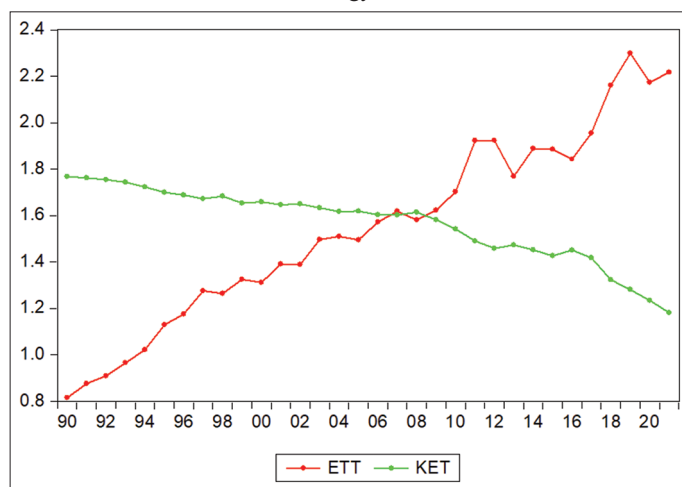
The trend shows that throughout the year the GDP per unit for energy use (GDP) for Indonesia 1990-2021 has fluctuated, but throughout 2010=2021 it has continued to increase, this is due to increasing economic activity in Indonesia, in terms of renewable energy in Indonesia such as energy Solar, water, wind, biomass and geothermal trends show a continuous decline seen in 2006-2021. It is also alleged that Indonesia's renewable energy has not been able to support domestic energy supply and demand so that Indonesia is still dependent on non-renewable energy such as coal, natural gas and oil, thereby increasing the trend of Indonesia's carbon emissions. From this trend, from 1990 to 2021 carbon emissions have continued to increase in Indonesia.

**Figure 1:** Conditions for the use of GDP for energy against Indonesia's CO<sub>2</sub> emissions



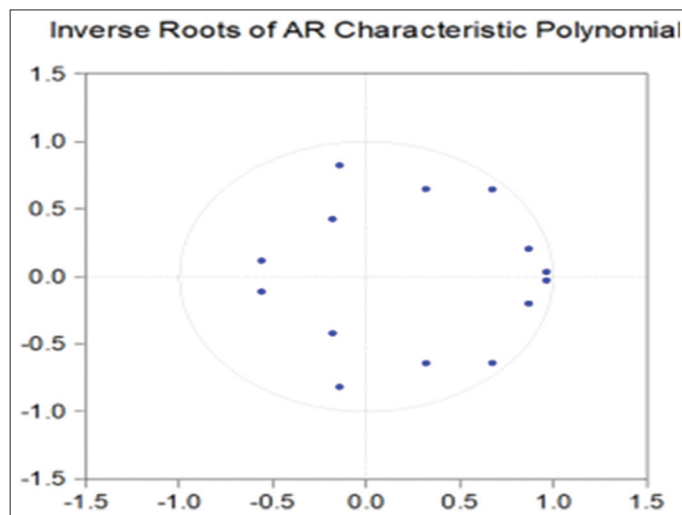
Source: World Bank Indonesia Energy Data, 2023

**Figure 2:** Conditions for the use of renewable energy and non-renewable energy in Indonesia

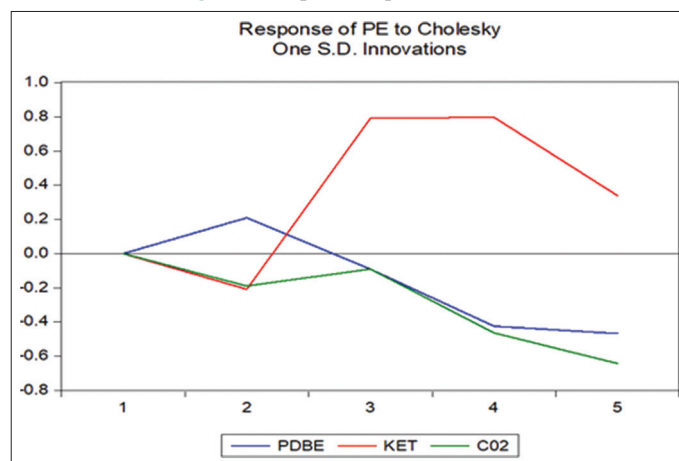


Source: World Bank Indonesia Energy Data, 2023

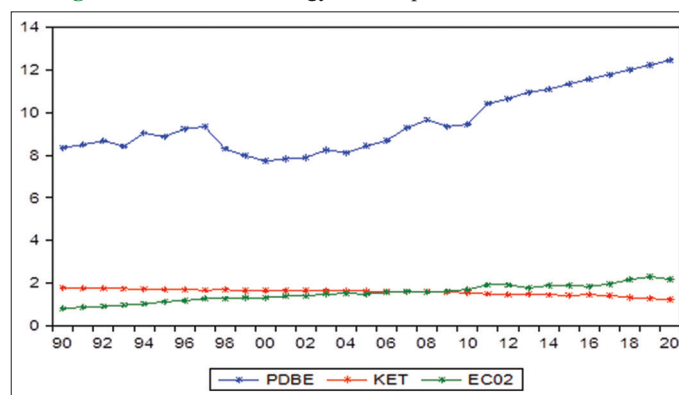
**Figure 3:** Vector autoregression model stability test



**Figure 4:** Impulse response function



**Figure 5:** Indonesia's energy consumption trend in 1990-2021



**Table 1: Unit root test results at level**

Variable	Augmented Dickey Fuller t-statistic	Prob	Result	Conclusion
PE	0.56033	0.9861	Accept H0	Not stationary
KET	0.71265	0.0810	Accept H0	Not stationary
CO <sub>2</sub>	-0.78947	0.8082	Accept H0	Not stationary
PDBE	0.71472	0.9906	Accept H0	Not stationary

**Table 2: Unit root test test results at level 1**

Variable	Augmented Dickey Fuller t-statistic	Prob	Result	Conclusion
PE	-5.121783	0.0002	Reject H0	Stationary
KET	-6.967049	0.0000	Reject H0	Stationary
CO <sub>2</sub>	-5.679998	0.0001	Reject H0	Stationary
PDBE	-4.738180	0.0007	Reject H0	Stationary

Indonesia is still not able to lead the direction of energy policy towards the use of renewable energy, from several studies also explaining (Liun et al., 2022), The development of Indonesia's economic potential in various sectors affects national energy needs as a whole significant. The economic sector is mainly industry, services and activities in the transportation support sector. Indonesia's energy needs for the next 40 years will adjust to developments in population growth, increasing GDP,



**Table 3: Optimum lag determination results**

Lag	Akaike information criterion
0	31.51178
1	16.98306
2	13.52191*

**Table 4: Results of roots of AR characteristic polynomial test**

Equation model	Modulus range
Equation model	0.374938-0.987435

**Table 5: Cointegration test results model equation 1**

Hypothesized	Eigenvalue	Trace Statistic	0.05 Critical value	Prob.**
None*	0.743201	64.07229	47.85613	0.0008
At most 1	0.513633	26.00741	29.79707	0.1285
At most 2	0.184002	5.825215	15.49471	0.7161
At most 3*	0.004689	0.131598	3.841466	0.0168

**Table 6: Long term vector error correction model estimation results**

Variable	Coefficient	t-statistic	Description
PE (-1)	1.000000		
PDBE (-1)	2.027177	[8.22251]	Significant
KET (-1)	-1.165004	[5.48567]	Significant
CO <sub>2</sub> (-1)	21.91770	[22.8496]	Significant
C	-87.26952		

[ ]: t-statistic, \*Based on confidence level 99% ( $\alpha=1\%$ )=1.31370, \*\*Based on confidence level 95% ( $\alpha=5\%$ )=1.70329, \*\*\*Based on confidence level 90% ( $\alpha=10\%$ )=2.47266

**Table 7: Short term vector error correction model estimation results**

Variable	Coefficient	t-statistic	Description
ECT	-0.623649	[-1.95734]	Significant
D (PDBE)(-1))	1.756400	[1.43908]	Significant
D (PDBE)(-2))	1.735481	[1.64131]	Significant
D (KET)(-1))	-0.766255	[-2.87565]	Significant
D (KET)(-2))	-0.245587	[-1.58332]	Signifikan
D (CO <sub>2</sub> )(-1))	9.602310	[1.27149]	Not significant
D (CO <sub>2</sub> )(-2))	15.02295	[2.15737]	Significant
C	-1.726701		

[ ]: t-statistic, \*Based on confidence level 99% ( $\alpha=1\%$ )=1.31370, \*\*Based on confidence level 95% ( $\alpha=5\%$ )=1.70329, \*\*\*Based on confidence level 90% ( $\alpha=10\%$ )=2.47266

**Table 8: Variance decomposition results**

Period	PDBE	KET	CO <sub>2</sub>
1	0.000000	0.000000	0.000000
2	0.011068	0.004354	7.315931
3	0.417272	0.160550	8.378486
4	0.715882	0.181632	8.574870
5	0.804131	0.253077	8.730641

technological developments and people's lifestyles according to the times. Energy needs will increase until 2060 by almost 3. This is a challenge for Indonesia to meet energy needs in the future by considering green and environmentally friendly trends. (Aswadi et al., 2023) from 1990 to 2019. Renewable energy consumption has a negative effect on Indonesia's economic growth. This is because the production of renewable energy is

still limited, but the level of consumption continues to increase. Consumption of non-renewable energy has a positive effect on Indonesia's economic growth. In general, energy consumption has a positive impact on Indonesia's economic growth. When the two are combined, both make a positive contribution to the national economy (Prastyabudi and Hafidz, 2020), energy consumption is dominated by energy produced from fossils, namely oil, coal, gas. Meanwhile, renewable energy has been used since the early 2000s with a big jump in solar energy consumption. Indonesia has the opportunity to switch to geothermal energy which contributes 3.6% to the national energy supply but is still classified as a low value.

## 6. CONCLUSIONS

Indonesia has great potential in developing renewable energy due to its wealth of natural resources and regional characteristics, the results of the study show that in the long and short term the role of GDP per unit of energy use for the economy is very much needed and has a positive effect, the role of carbon emissions in the short and long term CO<sub>2</sub> has the positive and significant direction tends to be quite high and indicates sectoral activity in the Indonesian economy has increased quite a bit and automatically the use of non-renewable energy tends to be still high. The role of non-renewable energy in the long term and short term is still moving negatively and significantly. This indicates that renewable energy in Indonesia tends to be still low, when renewable energy is increased it tends to make the economic sector temporarily have a temporary shortage of energy intake if it is replaced directly and will reduce the economy. Energy replacement must be carried out slowly and gradually, the condition of the shock response concludes that when the GDP of energy use and CO<sub>2</sub> is affected by a negative shock it will disrupt economic development, whereas if there is a negative shock the consumption of renewable energy still tends to be stable and positive for Indonesia's economic development.

The direction of the policy transition from non-renewable energy to renewable energy must be carried out by the Indonesian government in stages. The first step is that the Indonesian government must be able to meet the needs of foreign investment for renewable energy first, which is calculated for medium and long term needs. The economic sectors will temporarily be unstable when the energy shift is due to fuel changes, of course the Indonesian government must prepare an economic stability policy as the value of economic output temporarily decreases due to a temporary decrease in activity. Renewable energy use policy regulations must be applied to all provinces in stages and simultaneously, each region must be able to utilize regional resources for renewable energy.

## REFERENCES

- Alfisyahri, N., Abdi Prawira, I., Burhanuddin, B., Jalaluddin, F.A., Harmain, I. (2022), Renewable energy and economic growth in Indonesia: Evidence from VECM causality. *Sustainability: Theory, Practice and Policy*, 2(2), 111-222.
- Aswadi, K., Jamal, A., Syahnur, S., Nasir, M. (2023), Renewable and non-renewable energy consumption in Indonesia: Does it matter for economic growth? *International Journal of Energy Economics and*

- Policy, 13(2), 107-116.
- Azaliah, R., Hartono, D. (2020), Determinan intensitas energi di Indonesia: Analisis data panel. *Jurnal Ekonomi Dan Pembangunan*, 28, 192-214.
- Bhuiyan, M.A., Zhang, Q., Khare, V., Mikhaylov, A., Pinter, G., Huang, X. (2022), Renewable energy consumption and economic growth nexus-a systematic literature review. *Frontiers in Environmental Science*, 10, 878394.
- Boediman, A., Rahadi, R.A., Nugraha, B.A. (2021), An overview of Indonesian renewable energy studies and its investment opportunities. *Indonesian Journal of Energy*, 4(2), 87-100.
- Chen, H., Tackie, E.A., Ahakwa, I., Musah, M., Salakpi, A., Alfred, M., Atingabili, S. (2022), Does energy consumption, economic growth, urbanization, and population growth influence carbon emissions in the BRICS? Evidence from panel models robust to cross-sectional dependence and slope heterogeneity. *Environmental Science and Pollution Research*, 29(25), 37598-37616.
- Constantia, M. (2022), Detertminants of CO<sub>2</sub> emission intensity: Manufacturing firm-level evidence in Indonesia. *Jurnal Perencanaan Pembangunan*, [The Indonesian Journal of Development Planning], 6(3), 402-419.
- Dat, N.D., Hoang, N., Huyen, M.T., Huy, D.T.N., Lan, L.M. (2020), Energy consumption and economic growth in Indonesia. *International Journal of Energy Economics and Policy*, 10(5), 601-607.
- DEN. (2020), Neraca Energi Nasional 2019. Laporan Kajian Penelahaan Neraca Energi Nasional. p14.
- Gujarati, D. (2009), In: Fox, N., editors. *Basic Econometrics*. 5th ed. United States: McGraw-Hill.
- Halimanjaya, A. (2019), The political economy of Indonesia's renewable energy sector and its fiscal policy gap. *International Journal of Economics, Finance and Management Sciences*, 7(2), 45.
- Kementrian ESDM. (2019), Kebijakan Nasional Energi Baru Terbarukan dan Konservasi Energi. Indonesia: Kementerian ESDM. p1-32.
- Kusnadi, N.A., Aprilya, J.A., Dea, A.P.A., Durrotunnisa, D., Dinasty, R. (2022), Transisi Energi: Kerjasama Indonesia-IEA (International Energy Agency) Terhadap Perkembangan Energi Terbarukan. In: Seminar Nasional TREN D Technology of Renewable Energy and Development. p40-49.
- Langer, J., Quist, J., Blok, K. (2021), Review of renewable energy potentials in Indonesia and their contribution to a 100% renewable electricity system. *Energies*, 14(21), 7033.
- Liun, E., Dewi, D., Pane, J.S. (2022), Indonesia s energy demand projection until 2060. *International Journal of Energy Economics and Policy*, 12(2), 467-473.
- Magazzino, C., Mele, M., Morelli, G. (2021), The relationship between renewable energy and economic growth in a time of COVID-19: A machine learning experiment on the Brazilian economy. *Sustainability*, 13(3), 1285.
- Marwa, T., Bashir, A., Atiyatna, D.P., Hamidi, I., Mukhlis, M., Sukanto, S. (2022), The link between economic growth, electricity consumption, and CO<sub>2</sub> emissions: Evidence from Indonesia. *Signifikan: Jurnal Ilmu Ekonomi*, 11(2), 253-272.
- Mason, R., Swanson, T. (2002), The costs of uncoordinated regulation. *European Economic Review*, 46(1), 143-167.
- Mitić, P., Fedajev, A., Radulescu, M., Rehman, A. (2023), The relationship between CO<sub>2</sub> emissions, economic growth, available energy, and employment in SEE countries. *Environmental Science and Pollution Research*, 30(6), 16140-16155.
- Muhammad Ferro Berlianto, D., Setya Wijaya, R. (2022), Pengaruh transisi konsumsi energi fosil menuju energi baru terbarukan terhadap produk domestik bruto di Indonesia. *E-Jurnal Perspektif Ekonomi Dan Pembangunan Daerah*, 11(2), 105-112.
- Mujica, P., Saens, R. (2016), Exchange rate pass-through and inflation targets in Chile. *CEPAL Review*, 2015(117), 137-146.
- Prastyabudi, W.A., Hafidz, I. (2020), Energy consumption data analysis: Indonesia perspective. *Journal of Computer, Electronic, and Telecommunication*, 1(1), 1-10.
- Raihan, A., Tuspekova, A. (2022), The nexus between economic growth, renewable energy use, agricultural land expansion, and carbon emissions: New insights from Peru. *Energy Nexus*, 6, 100067.
- Sari, V.K. (2022), The impact of macroeconomic indicators on carbon emission in Indonesia. *Jurnal Perspektif Pembiayaan Dan Pembangunan Daerah*, 10(1), 53-62.
- Sugiyono, S. (2012), *Metode Penelitian Kuantitatif Kualitatif dan R&D*. Sweden: Alfa beta.
- Wahid, L.O.M.A. (2020), Analisis kebijakan energi nasional sebagai produk kebijakan transisi energi Indonesia. *Jurnal Energi Dan Lingkungan (Enerlink)*, 13(1), 7-16.
- Widarjono, A. (2018), *Econometrics Introduction and Its Applications Dissertation Guide EViews*. 5th ed. Indonesia: UPP STIM YKPN.